

Appendix. Uninstall procedure with previous version (Ver1.xx)

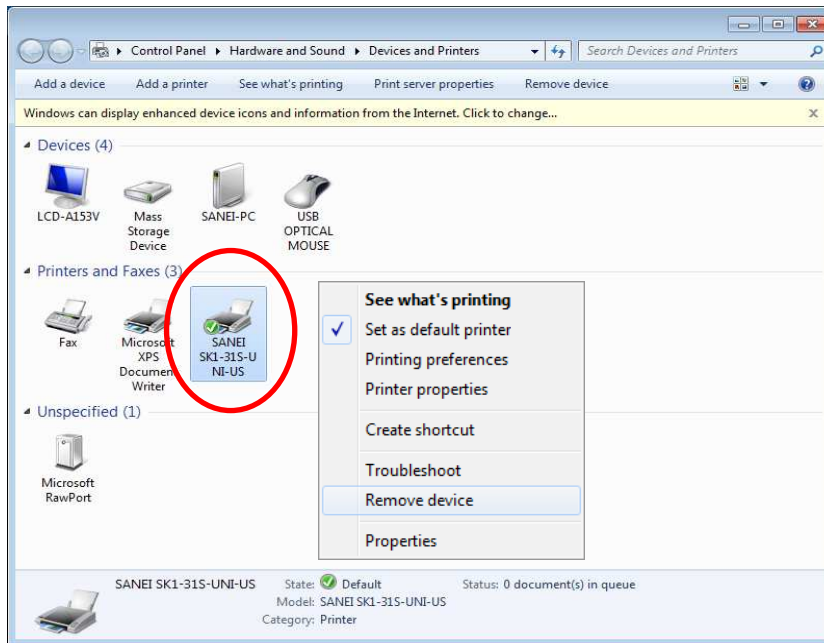
This document is a driver uninstallation procedure for Ver1.XX utility driver.

When you will update a utility driver, the printer driver (utility and standard driver) which was already installed must be uninstalled. How to uninstall is shown as following.

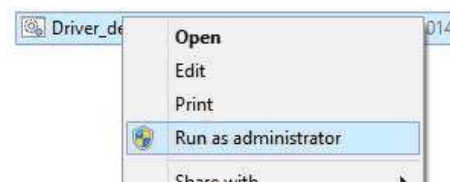
How to uninstall for SANEI SK1 utility driver

STEP1. Open “Device and Printer” window.

STEP2. Select “SANEI SK1-XXS-UNI-US”, Right-click and excutes to remove it as shown here.

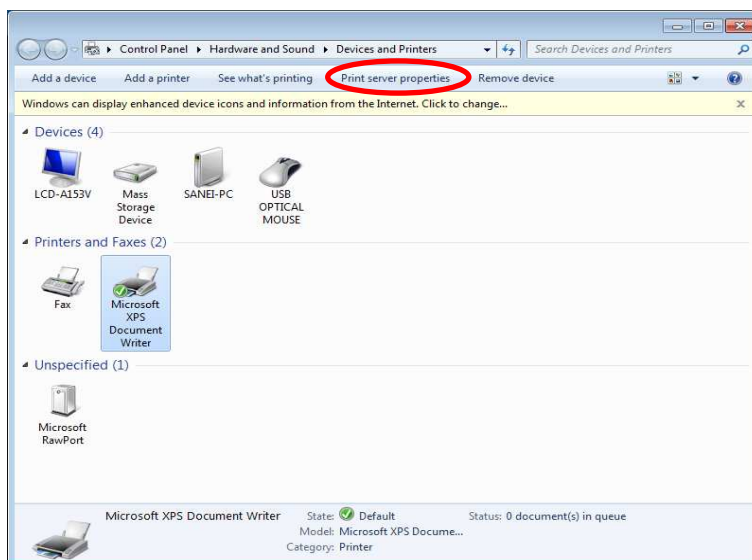


STEP3. Right click the batch “Driver_del.bat”, execute it by “Run as administrator”.

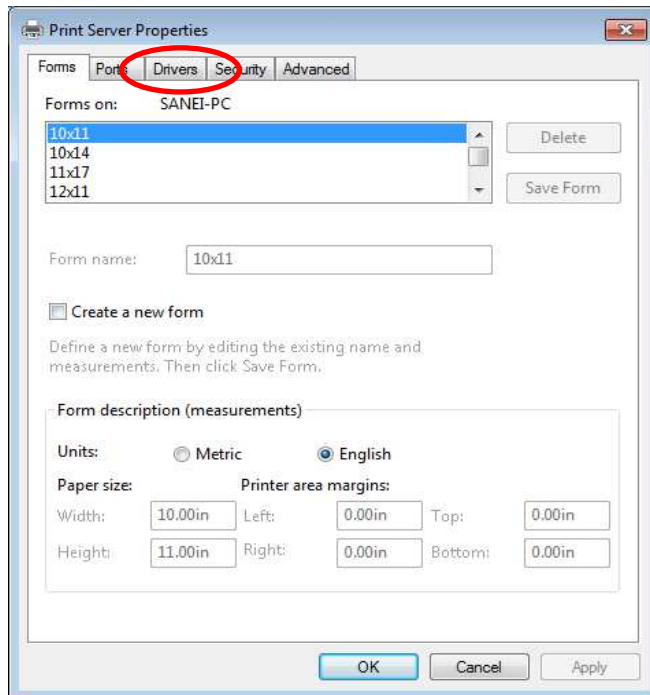


STEP4. Select other printer icon on “Printers and Faxes”.

Click “Print server properties” tab.



STEP5. Click “Drivers” tab.

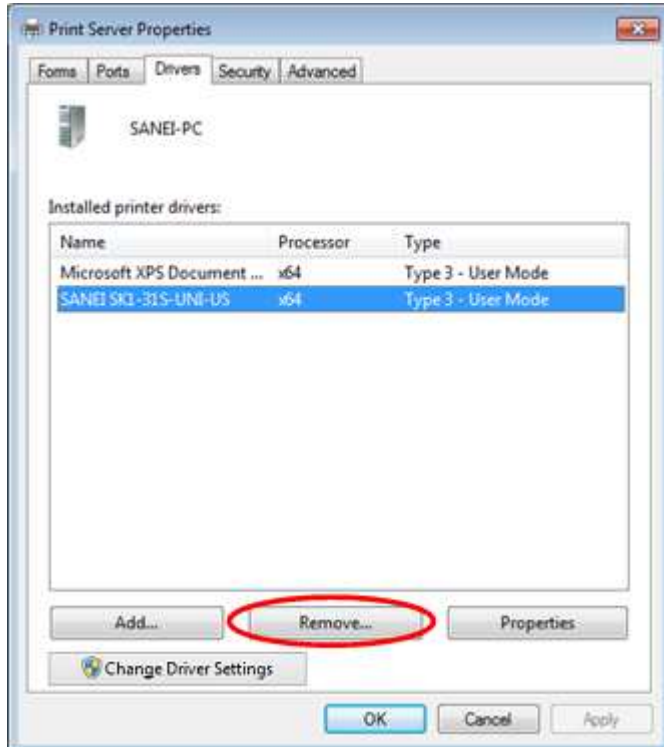


STEP6. Click “Change Driver Settings” button.

Select “SANEI SK1-31S-UNI-US” name and click “Remove” button.

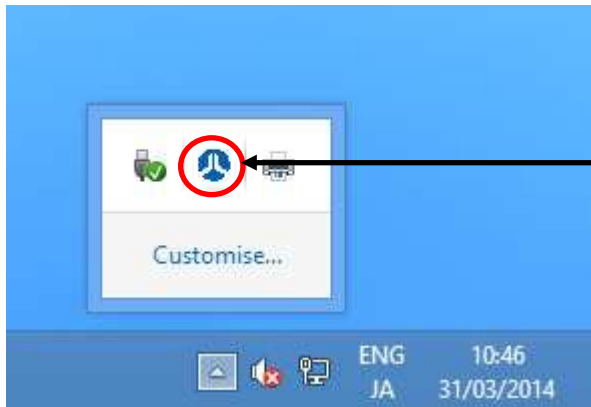
Select “Remove driver and driver package” and click “OK” button.

Then “SANEI SK1-31S-UNI-US” can be deleted.



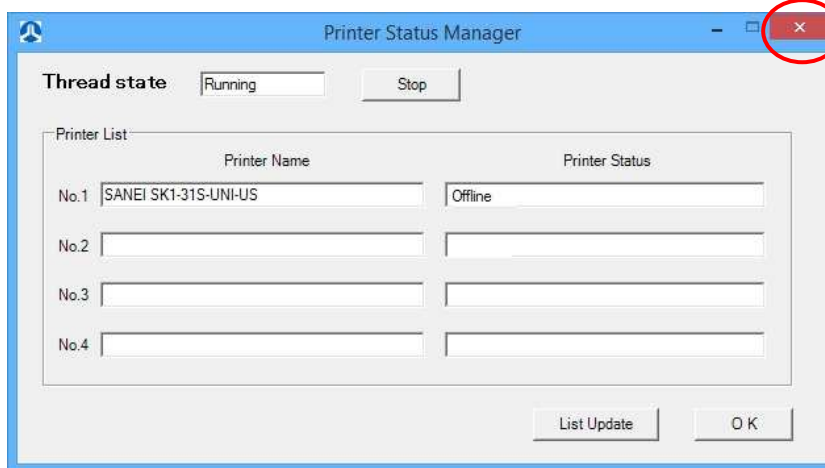
STEP7. Double-click an icon [Printer Status Manager]

* The status monitor is displayed.



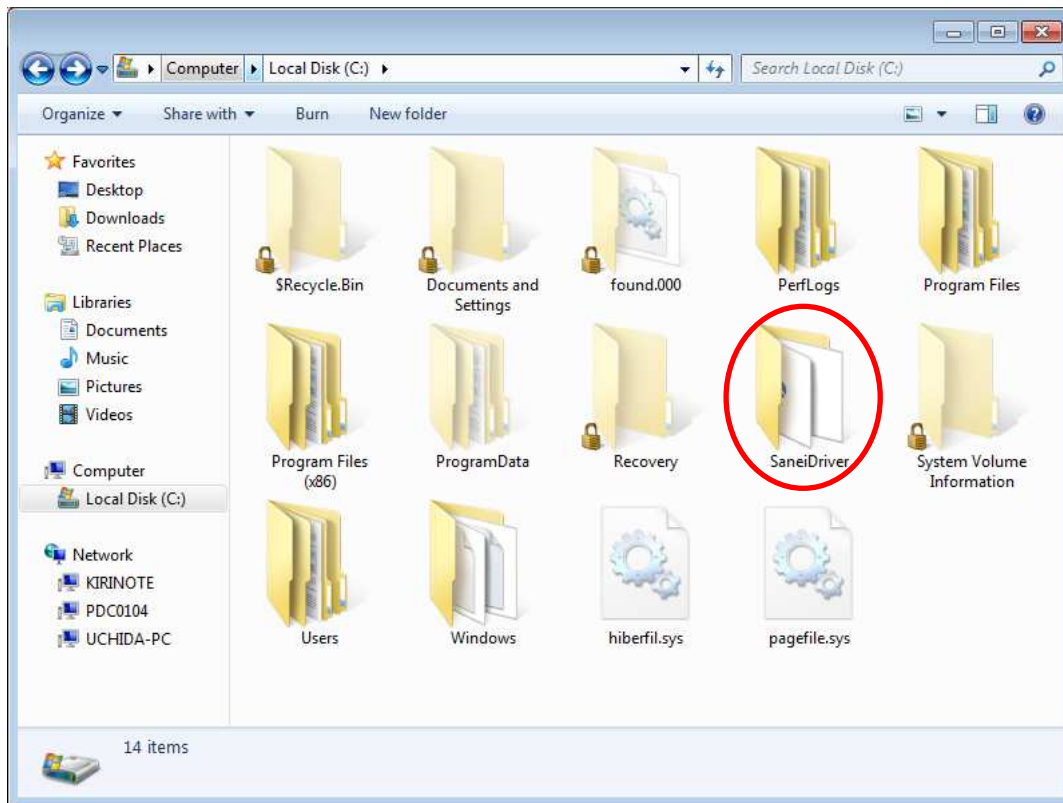
Double-click an icon [Printer Status Manager]

STEP8. Close a status monitor.



Close a status monitor.

STEP9. Delete “C:¥SaneiDriver” folder.



Finally Restart your PC

If the uninstalled device is not displayed on “Devices and Printers”,
The uninstall process is completed.

